

# Penrhos Farm

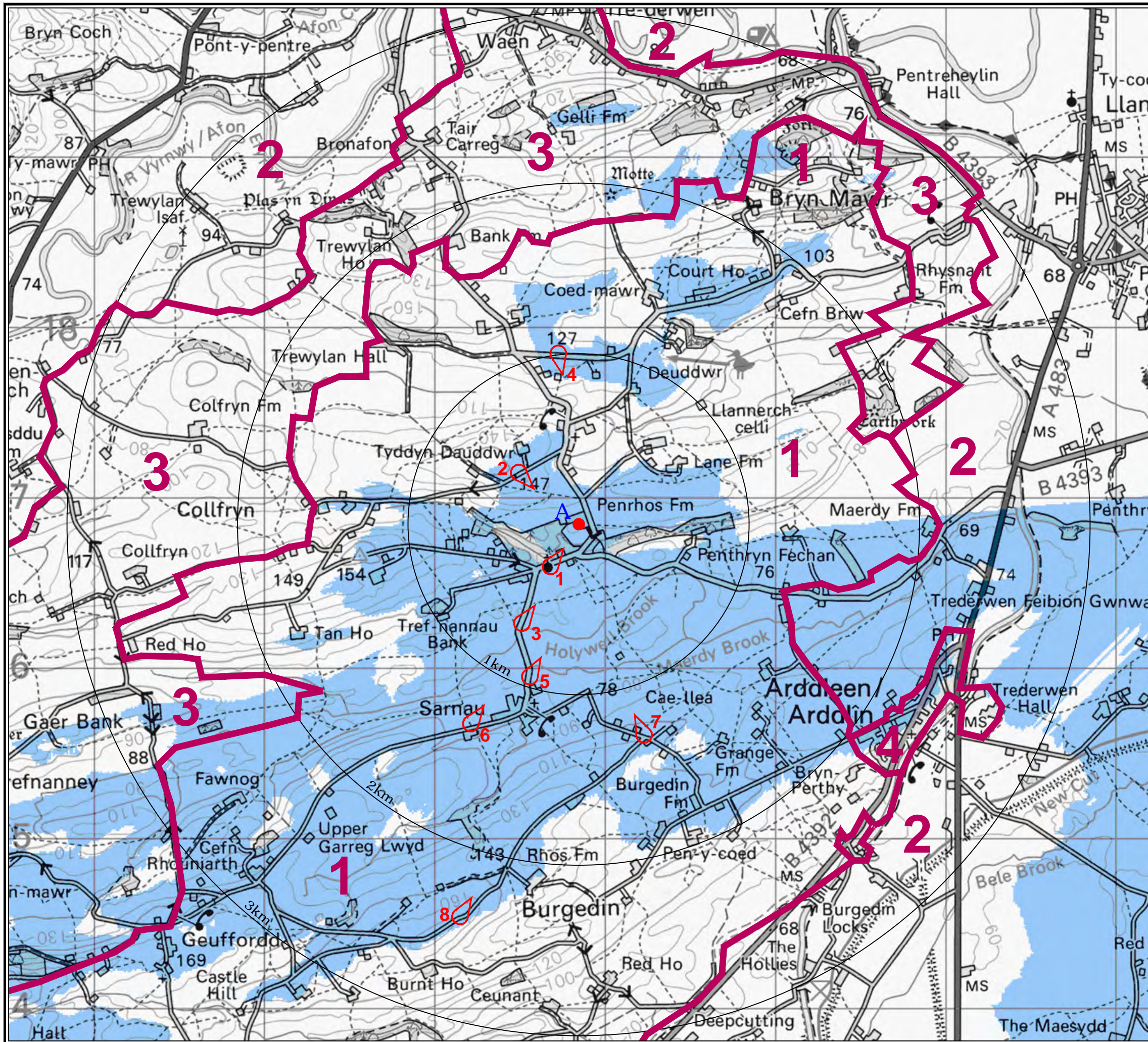
## **Landscape and Visual Impact Assessment**

### **Figures and Viewpoints Booklet**

April 2021

Viento Environmental Limited  
[www.viento-env.co.uk](http://www.viento-env.co.uk)





Project:

# Penrhos Farm

Client:



Key:

- Approximate location of proposed development at Penrhos Farm

Theoretical visibility of:

- 1 locational marker

Locational marker points:

- 323840, 316850 +9.56m AGL

*LANDMAP Visual & Sensory Areas:*

- 1 Guilsfield Rolling Farmland (High)
- 2 River Severn Floodplain (Moderate)
- 3 Vyrnwy Rolling Lowlands (Moderate)
- 4 Arddleen (Low)
- 👁️ LVIA viewpoint locations

Notes:

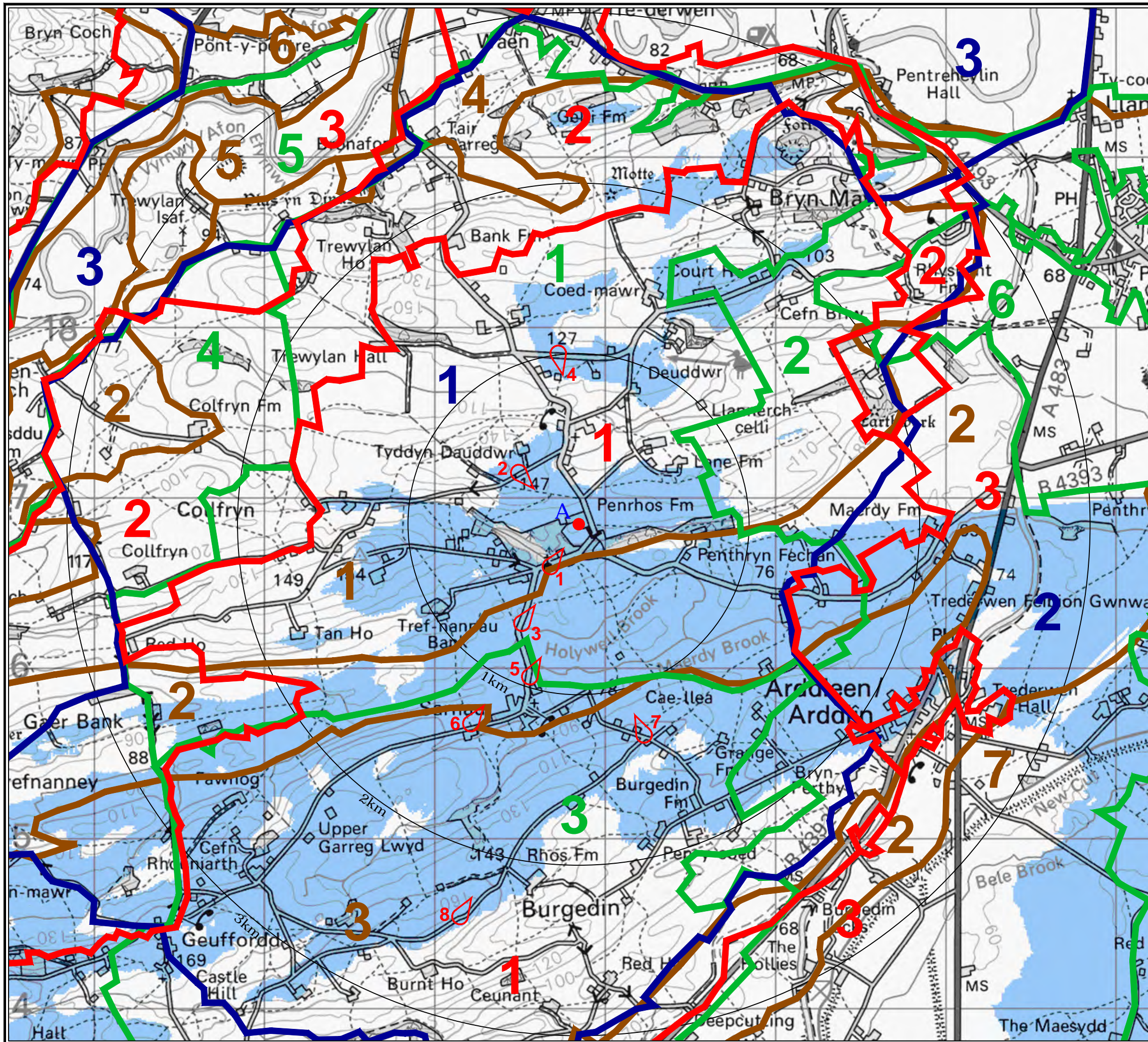
- ZTV, generated 30th November 2020.
- Predicted visibility is for observer eye level 2m above ground level.
- The analysis does not take into account the screening effects of vegetation, buildings or other surface features.
- Created using Ordnance Survey digital terrain data on a 50m grid.
- Reproduced from Ordnance Survey digital map data © Crown copyright 2021. All rights reserved. Licence number 100053544.

Scale:




**Figure LV1**  
Study Area and  
LANDMAP Visual & Sensory Areas







Project: Penrhos Farm

Client: 

Key:  
 Approximate location of the proposed development at Penrhos Farm


Theoretical visibility of:  
 1 locational marker

Locational marker points:  
 323840, 316850 +9.56m AGL

**LANDMAP Cultural Aspect Areas:**  
 1 Guilsfield Rolling Farmlands  
 2 Vyrnwy Rolling Lowlands  
 3 River Severn Floodplain

**LANDMAP Geological Aspect Areas:**  
 1 Deuddwr - Undulating lowland hill terrain (Moderate)  
 2 Four Crosses-Guilsfield-Sarnau - Lowland glacial outwash plain / field (Moderate)  
 3 Geuffordd-Welshpool - Undulating lowland hill terrain (Outstanding)  
 4 Waen - Lowland glacial outwash plain / field (Moderate)  
 5 Vyrnwy - Active lowland river-flood plain system (High)  
 6 Ledrod - Lowland glacial outwash plain / field (Moderate)  
 7 Severn - Active lowland river-flood plain system (High)

**LANDMAP Historic Aspect Areas:**  
 1 Trewylan - Irregular Fieldscapes (High)  
 2 Arddleen - Regular Fieldscapes (Outstanding)  
 3 Burgedin - Irregular Fieldscapes (Outstanding)  
 4 Maesmawr - Irregular Fieldscapes (Outstanding)  
 5 Dyffryn Meifod - Regular Fieldscapes (Outstanding)  
 6 Rhos Common - Irregular Fieldscapes (Outstanding)

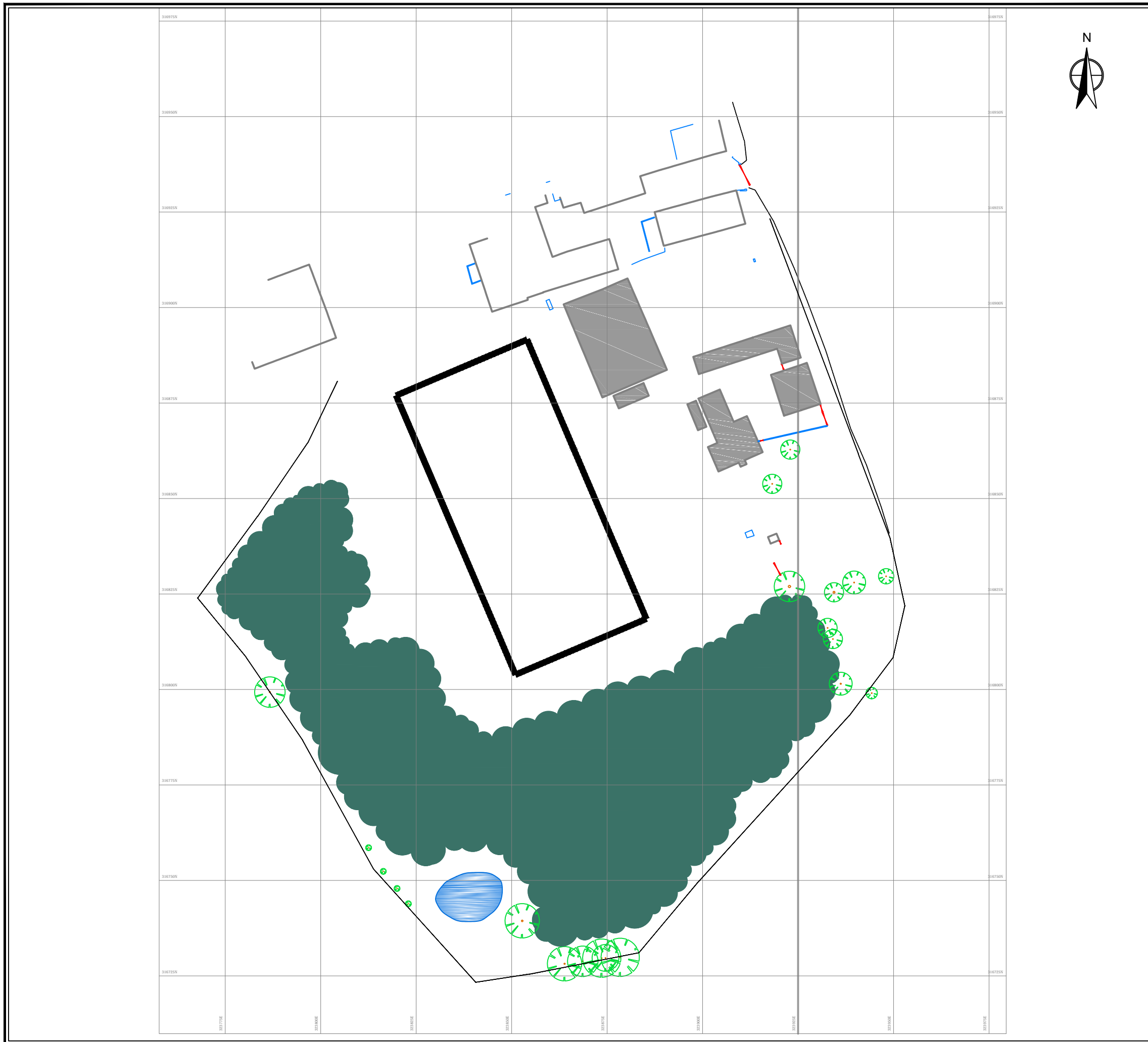
**LANDMAP Habitats Aspect Areas:**  
 1 Improved Grassland (Moderate)  
 2 Mosaic (High)  
 3 Improved Grassland (Moderate)  
 LVIA viewpoint locations

Notes:  
 1. For information regarding the ZTV please refer to **Figure LV1**.  
 2. Reproduced from Ordnance Survey digital map data © Crown copyright 2021. All rights reserved. Licence number 100053544.



**Figure LV2**  
 Other LANDMAP Aspect Layers 29-04-21








Project:

## Penrhos Farm

Client:



Key:

-  Retrospective permission building location
-  Approximate extent of proposed native woodland
-  Proposed pond

Notes:

1. Reproduced from Ordnance Survey digital map data © Crown copyright 2021. All rights reserved. Licence number 100053544.

Scale: 1:1000 @ A3

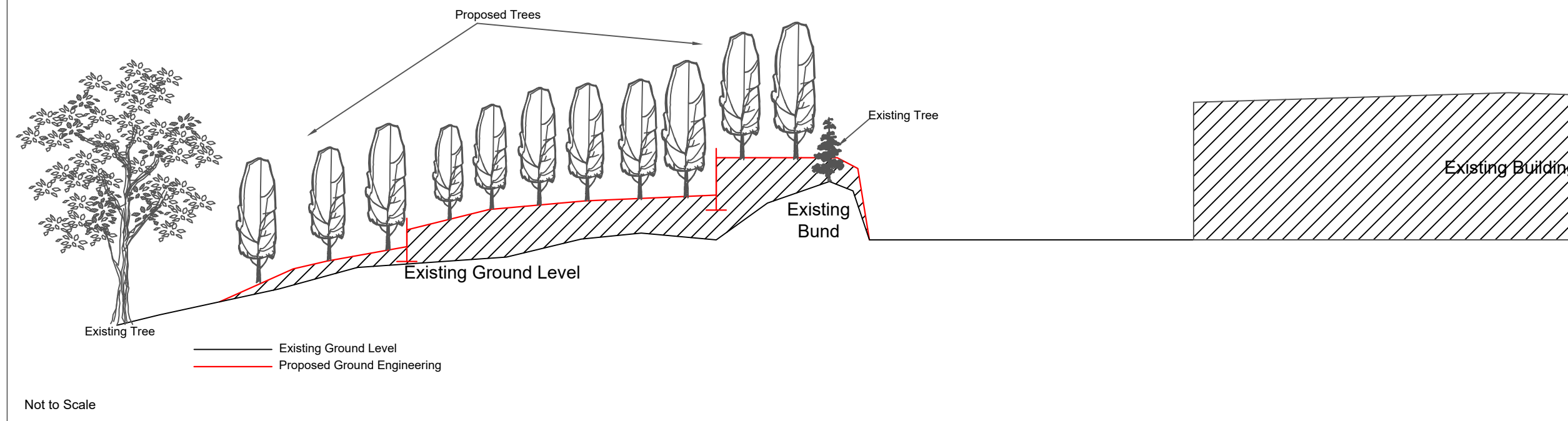


**Figure LV3**  
Proposed Native Woodland





Scale 1:1000



Not to Scale

THIS DRAWING IS TO BE READ IN CONJUNCTION WITH ALL RELATED DRAWINGS. ALL DIMENSIONS MUST BE CHECKED AND VERIFIED ON SITE BEFORE COMMENCING ANY WORK OR PRODUCING SHOP DRAWINGS. THE ORIGINATOR SHOULD BE NOTIFIED IMMEDIATELY OF ANY DISCREPANCY. THIS DRAWING IS COPYRIGHT AND REMAINS THE PROPERTY OF ROGER PARRY & PARTNERS.



Rev	Description	Date	Dr by	App by
Original				



Residential - Agricultural - Commercial	
Job	Retrospective planning permission at Penrhos Farm
Title	Section Plan
Location	Penrhos Farm Powys Wales SY22 6TF
Client	.
Scales	See Plan @ A3
Drawing No.	Figure LV4
Drawn by	AZ
Date	15/05/2019

HOGSTOW HALL, MINSTERLEY  
SHREWSBURY, SHROPSHIRE, SY5 0HZ  
Tel: 01743 791336 Fax: 01743 792770  
email: mail@rogerparry.net  
Web address: www.rogerparry.net



Existing View



<b>Project:</b>	Penrhos Farm	<b>Viewpoint</b>	<b>Easting</b>	<b>Northing</b>	<b>Altitude</b>	<b>Distance to site</b>	<b>Horizontal field of view (HFOV °)</b>	40	<b>Height of camera (m)</b>	1.6
<b>Location:</b>	Church of the Holy Trinity, Penrhos	LVIA 1	323680	316620	85m AOD	0.25km	<b>Recommended viewing distance:</b>	500mm	<b>Date photograph taken</b>	260421



Existing View



<b>Project:</b>	Penrhos Farm	<b>Viewpoint</b>	<b>Easting</b>	<b>Northing</b>	<b>Altitude</b>	<b>Distance to site</b>	<b>Horizontal field of view (HFOV °)</b>	40	<b>Height of camera (m)</b>	1.6
<b>Location:</b>	Local road near Tyddyn Daudwr	LVIA 2	323495	317150	145m AOD	0.4km	<b>Recommended viewing distance:</b>	500mm	<b>Date photograph taken</b>	260421



Existing View



<b>Project:</b>	Penrhos Farm	<b>Viewpoint</b>	<b>Easting</b>	<b>Northing</b>	<b>Altitude</b>	<b>Distance to site</b>	<b>Horizontal field of view (HFOV °)</b>	40	<b>Height of camera (m)</b>	1.6
<b>Location:</b>	Sarnau to Penrhos road	LVIA 3	323525	316265	80m AOD	0.6km	<b>Recommended viewing distance:</b>	500mm	<b>Date photograph taken</b>	260421







Existing View



<b>Project:</b>	Penrhos Farm	<b>Viewpoint</b>	<b>Easting</b>	<b>Northing</b>	<b>Altitude</b>	<b>Distance to site</b>	<b>Horizontal field of view (HFOV °)</b>	40	<b>Height of camera (m)</b>	1.6
<b>Location:</b>	Local road near Deuddwr	LVIA 4	323725	317850	125m AOD	0.9km	<b>Recommended viewing distance:</b>	500mm	<b>Date photograph taken</b>	260421



Existing View



<b>Project:</b>	Penrhos Farm	<b>Viewpoint</b>	<b>Easting</b>	<b>Northing</b>	<b>Altitude</b>	<b>Distance to site</b>	<b>Horizontal field of view (HFOV °)</b>	40	<b>Height of camera (m)</b>	1.6
<b>Location:</b>	Northern edge of Sarnau	LVIA 5	323575	315950	80m AOD	1.0km	<b>Recommended viewing distance:</b>	500mm	<b>Date photograph taken</b>	260421



Existing View



<b>Project:</b>	Penrhos Farm	<b>Viewpoint</b>	<b>Easting</b>	<b>Northing</b>	<b>Altitude</b>	<b>Distance to site</b>	<b>Horizontal field of view (HFOV °)</b>	40	<b>Height of camera (m)</b>	1.6
<b>Location:</b>	West edge of Sarnau	LVIA 6	323215	315675	95m AOD	1.25km	<b>Recommended viewing distance:</b>	500mm	<b>Date photograph taken</b>	260421







Existing View



<b>Project:</b>	Penrhos Farm	<b>Viewpoint</b>	<b>Easting</b>	<b>Northing</b>	<b>Altitude</b>	<b>Distance to site</b>	<b>Horizontal field of view (HFOV °)</b>	40	<b>Height of camera (m)</b>	1.6
<b>Location:</b>	Local road east of Sarnau	LVIA 7	324230	315625	105m AOD	1.25km	<b>Recommended viewing distance:</b>	500mm	<b>Date photograph taken</b>	260421







Existing View



<b>Project:</b>	Penrhos Farm	<b>Viewpoint</b>	<b>Easting</b>	<b>Northing</b>	<b>Altitude</b>	<b>Distance to site</b>	<b>Horizontal field of view (HFOV °)</b>	40	<b>Height of camera (m)</b>	1.6
<b>Location:</b>	Local road near Burgedin	LVIA 8	323150	314560	165m AOD	2.35km	<b>Recommended viewing distance:</b>	500mm	<b>Date photograph taken</b>	260421











Existing View



<b>Project:</b>	Penrhos Farm	<b>Viewpoint</b>	<b>Easting</b>	<b>Northing</b>	<b>Altitude</b>	<b>Distance to site</b>	<b>Horizontal field of view (HFOV °)</b>	40	<b>Height of camera (m)</b>	1.6
<b>Location:</b>	Sarnau to Penrhos road	LVIA 3	323525	316265	80m AOD	0.6km	<b>Recommended viewing distance:</b>	500mm	<b>Date photograph taken</b>	180518



Existing View



<b>Project:</b>	Penrhos Farm	<b>Viewpoint</b>	<b>Easting</b>	<b>Northing</b>	<b>Altitude</b>	<b>Distance to site</b>	<b>Horizontal field of view (HFOV °)</b>	40	<b>Height of camera (m)</b>	1.6
<b>Location:</b>	Sarnau to Penrhos road	LVIA 3	323525	316265	80m AOD	0.6km	<b>Recommended viewing distance:</b>	500mm	<b>Date photograph taken</b>	150519



Existing View



<b>Project:</b>	Penrhos Farm	<b>Viewpoint</b>	<b>Easting</b>	<b>Northing</b>	<b>Altitude</b>	<b>Distance to site</b>	<b>Horizontal field of view (HFOV °)</b>	40	<b>Height of camera (m)</b>	1.6
<b>Location:</b>	Sarnau to Penrhos road	LVIA 3	323525	316265	80m AOD	0.6km	<b>Recommended viewing distance:</b>	500mm	<b>Date photograph taken</b>	081119



Existing View



<b>Project:</b>	Penrhos Farm	<b>Viewpoint</b>	<b>Easting</b>	<b>Northing</b>	<b>Altitude</b>	<b>Distance to site</b>	<b>Horizontal field of view (HFOV °)</b>	40	<b>Height of camera (m)</b>	1.6
<b>Location:</b>	Sarnau to Penrhos road	LVIA 3	323525	316265	80m AOD	0.6km	<b>Recommended viewing distance:</b>	500mm	<b>Date photograph taken</b>	220520