



## MANURE MANAGEMENT PLAN

**DEVELOPMENT:** Erection of a Poultry Unit including silos and associated works

**LOCATION:** Ty Nant  
Talybont  
Ceredigion  
SY24 5DN

**CLIENT:** E Evans & Co

**Roger Parry & Partners LLP**  
The Estates Office, 20 Salop Road, Oswestry, Shropshire, SY11 2NU  
Tel: 01691655334 Fax: 01691 657798  
Email: [richard@rogerparry.net](mailto:richard@rogerparry.net)

*Also at: 1 Berriew Street, Welshpool, Powys, SY21 7SQ  
Tel: 01938 554499 Fax: 01938 554462  
email: [welshpool@rogerparry.net](mailto:welshpool@rogerparry.net)*

*Also at: Hogstow Hall, Minsterley, Shrewsbury, SY5 0HZ  
Tel: 01743 791336 Fax: 01743 792770  
email: [mail@rogerparry.net](mailto:mail@rogerparry.net)*

**June 2019**



The Estates Office  
20 Salop Road  
Oswestry  
SY11 2NU

Phone 01691 655334

[richard@rogerparry.net](mailto:richard@rogerparry.net)  
[www.rogerparry.net](http://www.rogerparry.net)

*Offices also at Minsterley &  
Welshpool*

## MANURE MANAGEMENT PLAN

This manure management plan has been prepared for E Evans & Co of Ty Nant, Talybont, Ceredigion, SY24 5DN.

The farm extends to approximately 2,538.89 acres (1,027 hectares) of owner occupied and rented land. The farm currently have a flock of 2,000 ewes, 2,000 lambs, 500 shearling ewes, 40 rams, 70 breeding cows, 70 calves and 2 bulls with 110,000 hens proposed. The applicants currently buy in fertiliser to spread on the land.

The manure management plan has been prepared for the total stock of 2,000 ewes, 2,000 lambs, 500 shearling ewes, 40 rams, 70 breeding cows, 70 calves and 2 bulls and 110,000 birds.

A buffer of 10m has been provided to all watercourses, and no spreading will be done on this buffer zone. The farm has therefore sufficient capacity to dispose of all manure produced by all enterprises in accordance with all the relevant regulations and legislation.

The total amount of manure (N) that can be applied over the spreadable land on the farm would be 975 hectares x 250kg = 243,750kg N.

The total produced on the farm is 352,466kg N, and therefore manure will have to be exported to local AD plants (Table 1).

Table 1:

Stock Unit	Stock Numbers	Kg N per Stock Unit	Total Kg N Produced
1 ewe	2,000	7.6	15,200
1 ewe lamb	2,000	2	4,000
1 shearling ewe	500	1.4	700
1 ram	40	12	480
1 breeding cow	70	77	5,390
1 calf	70	8	560
1 bull	2	48	96
Broilers	836,000 (based on 7.6 crop cycles)	0.39	326,040
<b>Total Kg N produced</b>			<b>352,466</b>

A map is provided in the full plan which shows Red Areas where manure spreading should not take place.

### Contingency Plan

There are a number of covered areas on the farm to allow for storing any manure, slurry and dirty water produced at times when spreading may not be possible e.g. due to wet, waterlogged or frozen conditions in accordance with the Code of Good Agricultural Practice. This is to ensure manures and slurry are spread at appropriate times to prevent pollution and maximise uptake of nutrients for crop growth. Manure will also be exported off site to local AD plants. Measures will be put in place for the storage of wash water during and after disease outbreak.

Any contaminated wash water will be stored in containers separate from other manures, and will be disposed of by a specialist contractor licensed to deal with such wastes.



The Estates Office  
20 Salop Road  
Oswestry  
SY11 2NU

Phone 01691 655334

[richard@rogerparry.net](mailto:richard@rogerparry.net)  
[www.rogerparry.net](http://www.rogerparry.net)

Offices also at Minsterley &  
Welshpool

Areas on which solid manures and slurry should never be spread are:

Ditches and watercourses:

- Within at least 10 metres (11 yards) of either side of any watercourse including ditches and piped ditches. This will avoid direct spreading into the watercourse and also reduce the risk of run-off reaching the watercourse. Do not forget to include watercourses that form the boundary of your farm.

Other non-spreading (red) areas:

- Within at least 50 metres (55 yards) of any spring, well, borehole or reservoir that supplies water for human consumption or farm dairies.
- Very steep slopes where run-off is a high risk throughout the year.
- Any areas where you may not be allowed to spread for reasons such as a tenancy agreement, an abatement notice due to smell, set-aside land, Sites of Special Scientific Interest (SSSIs) or Environmentally Sensitive Areas (ESAs).
- The surface is rocky or uneven so that your equipment cannot be used effectively or safely.

## APPLICATION METHODS

Manures will be stored and spread in accordance with the water, soil and air Codes of Good Agricultural Practice.

Manures will be stored in field stores and manure heaps at Ty Nant on arable ground and will be densely packed with a A shaped profile.

- Manure heaps will be well away from water courses, drainage schemes and ditches.
- Manure will be spread under suitable conditions
  - Wind direction will be chosen to be blowing with prevailing direction from the west which will blow any odours away from the closest dwellings.
  - The ground to receive the manure will not be water logged or frozen.
  - Spreading will be done at least 10 metres away from any water courses or ditches
- There is a covered concrete pad at Ty Nant that can be used for emergency storage when conditions are not suitable to store manure on the fields. This shed has a dirty water system and has an impermeable base the shed used to be used for wintering cattle.
- Manure will be incorporated in the soil within 24 hours of application, where this is possible due to conditions.

## MANURE SPREADING PLAN

Manure will be spread according to the annual cropping plan.

Manure will be tested and analysed on a regular basis so that quantities applied will mean that applications will concur with crop requirements as laid out in DEFRA document RB209.



The Estates Office  
20 Salop Road  
Oswestry  
SY11 2NU

Phone 01691 655334

[richard@rogerparry.net](mailto:richard@rogerparry.net)  
[www.rogerparry.net](http://www.rogerparry.net)

Offices also at Minsterley &  
Welshpool

**Table 2**

<b>Total Manure Production</b>			
<b>Group</b>	<b>Kg N Produced</b>	<b>No of Animals</b>	<b>Total Kg N</b>
Breeding ewes	7.6	2,000	15,200
Lambs	2	2,000	4,000
Shearling ewes	1.4	500	700
Rams	12	40	480
Breeding cows	77	70	5,390
Calves	8	70	560
Bulls	48	2	96
Broilers	0.39	836,000	326,040
Total N Produced			352,466 Kg N
Total N Exported			108,716 Kg N
Spreadable Area			975 Ha
Total N/Ha			250kg N/Ha



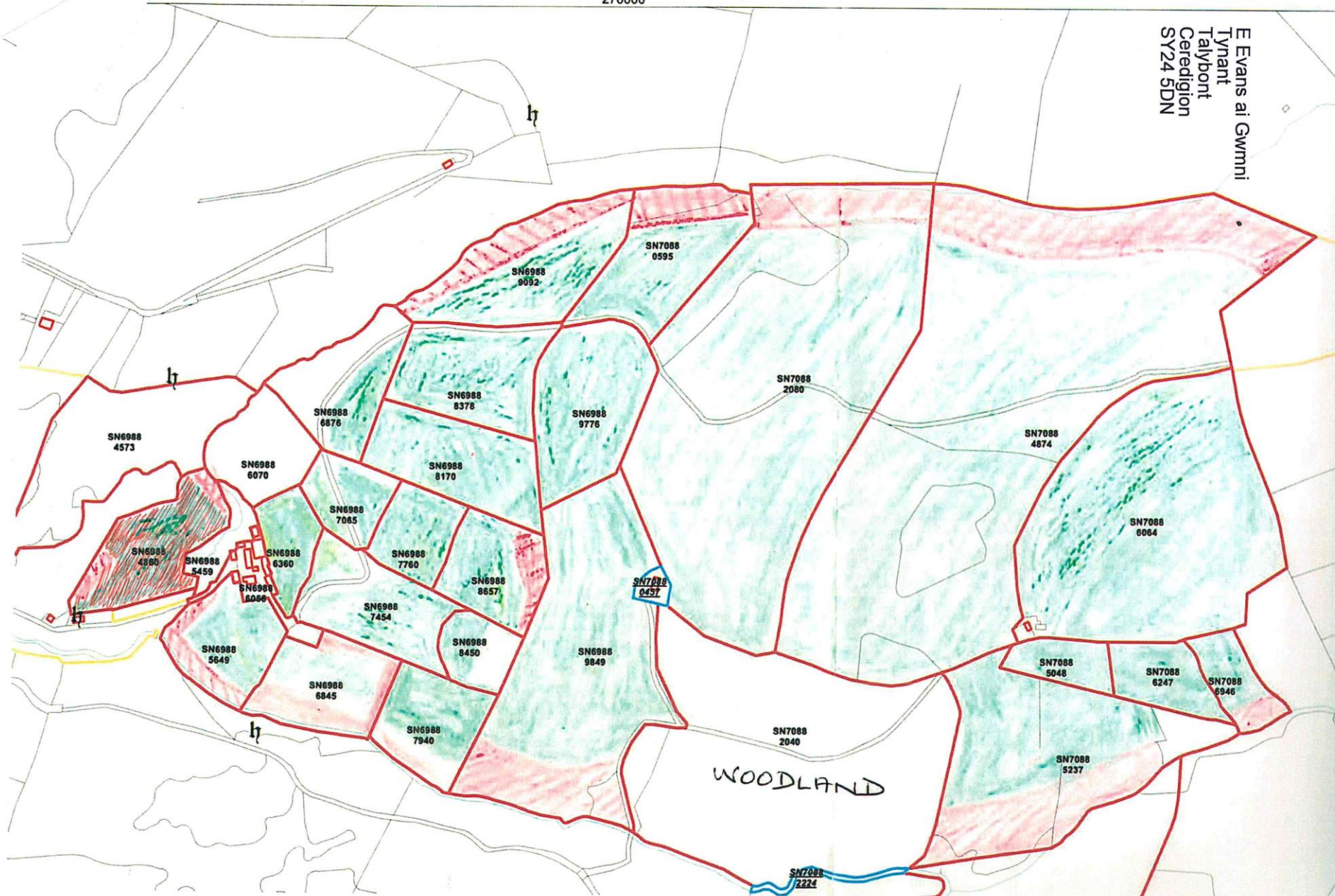
The Estates Office  
20 Salop Road  
Oswestry  
SY11 2NU

Phone 01691 655334

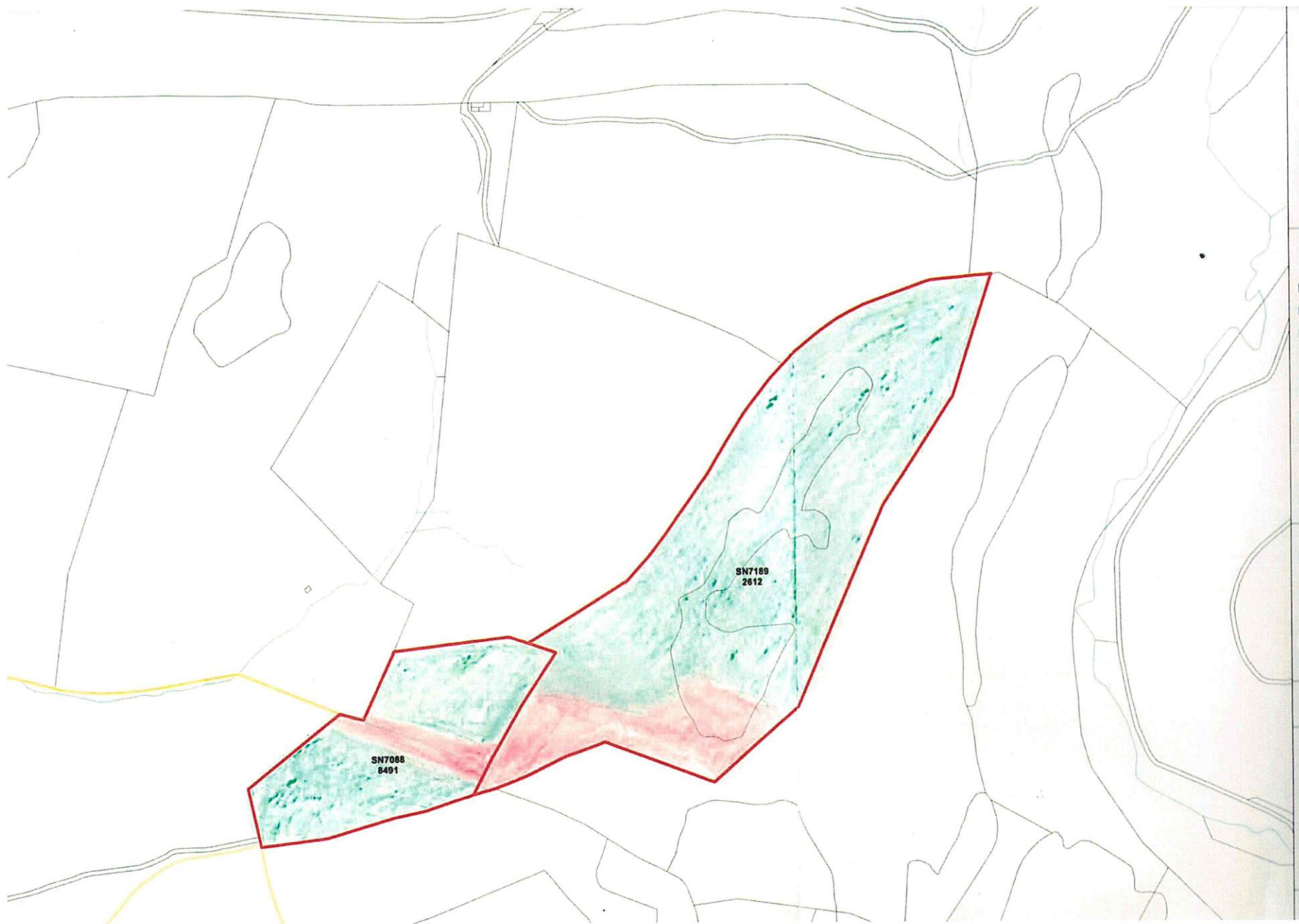
[richard@rogerparry.net](mailto:richard@rogerparry.net)  
[www.rogerparry.net](http://www.rogerparry.net)

*Offices also at Minsterley & Welshpool*

E Evans ai Gwmni  
Tynant  
Talybont  
Ceredigion  
SY24 5DN







287000



