
Lighting Design Scheme

Erection of a Broiler unit
including silos and all associated
works

Prepared for Mills Poultry Ltd

Land East of B4395, Llangadfan,
Welshpool, Powys, SY21 0PZ



land & property
professionals

Roger Parry & Partners LLP
www.rogerparry.net
gerallt@rogerparry.net
Tel: 01938 554499

1. Introduction

This lighting design scheme has been written for the erection of a free-range egg production including silos and all associated works. The Broiler unit is located at Land East of B4395, Llangadfan, Welshpool.

2. Proposal

The nature of the proposed poultry installation means that some light sources will be required to allow safe and effective activities within the site to take place. The assessment has identified that the site is located within a relatively dark, rural context with limited existing sources of light. However, the site is located in an intensively farmed area and as such field operations and other activities take place during hours of darkness and use intense lighting for visibility (rather than security purposes).

The main building's gable ends will be lit externally with a single low-wattage fitting of low intensity lighting during normal working hours in winter months. Lighting of the site would only be required during working hours in winter months and during bird catching where lighting would be kept as low as practically possible. Appropriate cowls/shielding of lights would be instigated, the light spread would be minimised through use of directional lighting and hours of lighting would be kept to a minimum to reduce disturbance.

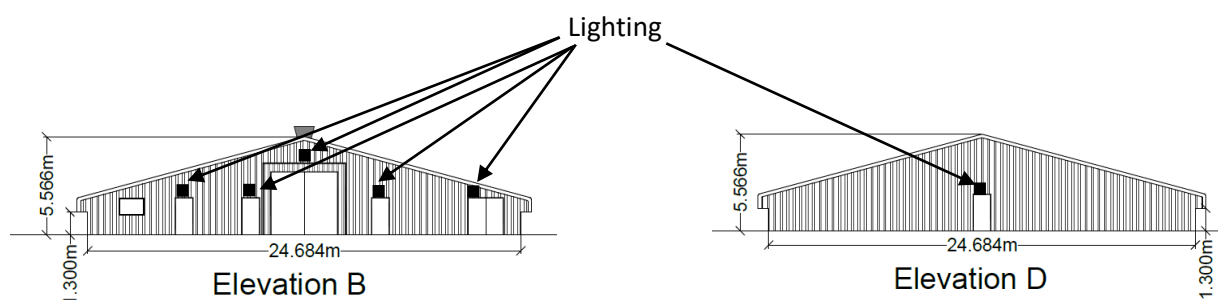


Figure 1: Lighting Scheme for each poultry building

There will be no round the clock external lighting of the site and no use of high intensity security lighting. All external lighting will be downward facing and protected with a cowl to reduce light spill to outside the unit.

During hours of darkness the poultry shed will be illuminated internally to 0.4 lux. The buildings will be clad with high density metal profile sheeting and therefore no light will escape to outside. Regular tests will be conducted to check the effectiveness of the light proofing. The windows will be shuttered to avoid light escaping to the outside.

During the clear out the site will be lit by low wattage lighting while birds are being removing from the buildings, this operation will be carried out in low light conditions to minimise stress to the birds.

It is anticipated that the potential impact associated with this aspect of the proposed development will be minimal as there will not be round the clock security lighting and the area of lighting (the front gable ends of the buildings) is directed away from the main

residential areas, this will respect the rural context of the site. Added to this the lighting will be directed downwards to reduce light escaping from the site plus each light will be protected with a cowl to avoid the lights lighting any areas outside of the site. The lighting has been sited and angled to provide the minimum illumination required by the applicant so as not to adversely affect road users, neighbours, the natural environment or wildlife.